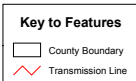
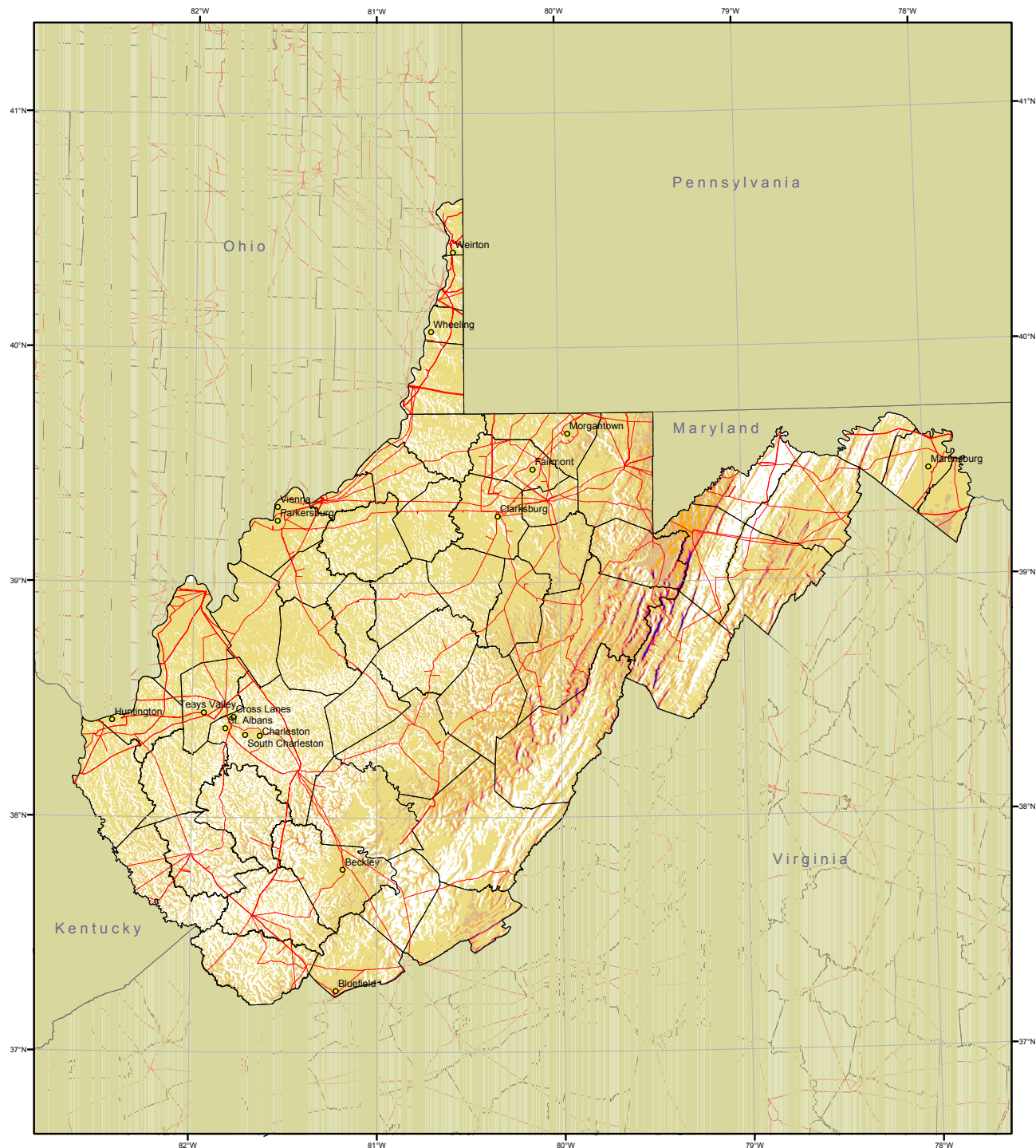


Wind Power Map of West Virginia at 50 m



Projection: Universal Transverse Mercator (Zone 17)
Spatial Resolution of Wind Resource Data: 200m

This map was created by TrueWind Solutions using the MesoMap system and historical weather data. Although it is believed to represent an accurate overall picture of the wind energy resource, estimates at any location should be confirmed by measurement.

