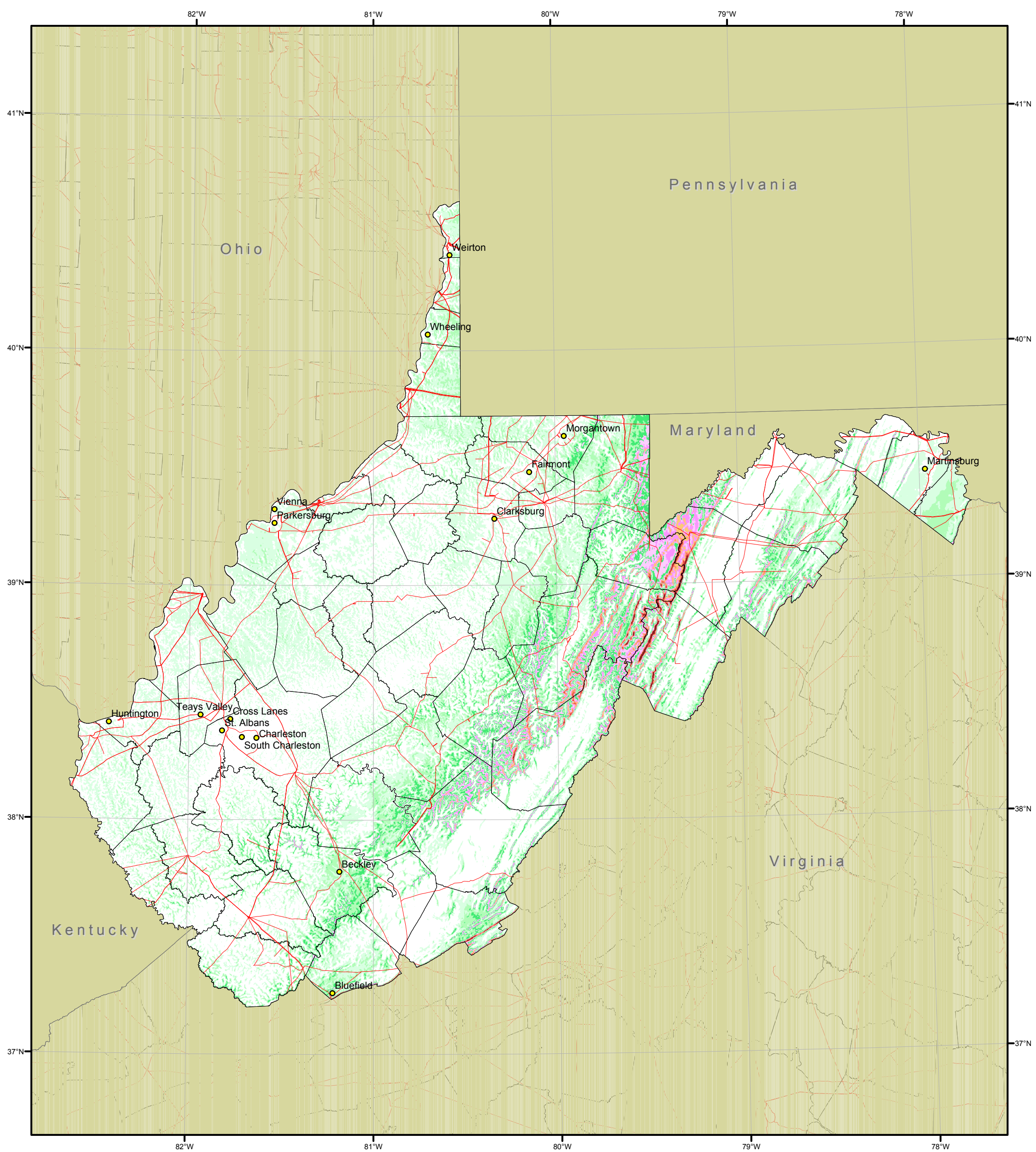


Wind Speed Map of West Virginia at 100 m



Wind Resource at 100m		
Wind Speed		
	mph	m/s
	<12.3	<5.5
	12.3 - 13.4	5.5 - 6.0
	13.4 - 14.5	6.0 - 6.5
	14.5 - 15.7	6.5 - 7.0
	15.7 - 16.8	7.0 - 7.5
	16.8 - 17.9	7.5 - 8.0
	17.9 - 19.0	8.0 - 8.5
	19.0 - 20.1	8.5 - 9.0
	20.1 - 21.3	9.0 - 9.5
	>21.3	>9.5

Key to Features

County Boundary

Transmission Line

Projection: Universal Transverse Mercator (Zone 17)
Spatial Resolution of Wind Resource Data: 200m

This map was created by TrueWind Solutions using the MesoMap system and historical weather data. Although it is believed to represent an accurate overall picture of the wind energy resource, estimates at any location should be confirmed by measurement.

